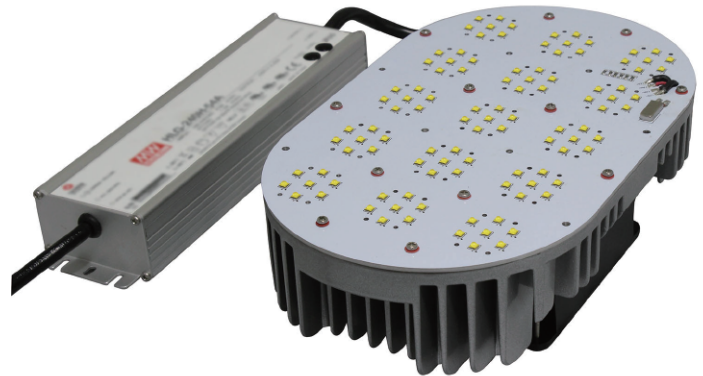


# G2G-RK-200W

## LED Retrofit Kits

G2G's unique LED technology provides significant advantages in illumination efficiency, while minimizing refraction and reflection inside the optical system. Our fixtures ensure a lower density of dirt and dust particles that may settle within the light over time, and has competitively high standards in maintaining luminaire reliability for years to come.



### LED RETROFIT KIT SPECIFICATIONS

<b>Lifetime</b>	≥50,000 hours	<b>Material</b>	Die-cast aluminum
<b>Working Environment</b>	-20°C to 45°C	<b>Fixture Dimension</b>	10.4 x6.3 x2.4in
<b>Working Humidity</b>	20%-90%	<b>Packaging</b>	4pcs/ctn
<b>CRI</b>	Ra>80	<b>Protection Grade</b>	IP65 wet-Location
<b>LED Source</b>	105pcs cree smd LEDs	<b>Warranty</b>	5 Years

### LED RETROFIT KIT PRODUCT OPTIONS LIST

Model No.	Power	Input Voltage	Input Current	Base	Lumens	CCT
G2G-RK-200W	200W	100-277VAC/347VAC/480VAC	2A(Max.)	E26/E39	19800-21000Lm	2700-8000K

# G2G-RK-150W

## LED Retrofit Kits

G2G's unique LED technology provides significant advantages in illumination efficiency, while minimizing refraction and reflection inside the optical system. Our fixtures ensure a lower density of dirt and dust particles that may settle within the light over time, and has competitively high standards in maintaining luminaire reliability for years to come.



### LED RETROFIT KIT SPECIFICATIONS

<b>Lifetime</b>	≥50,000 hours	<b>Material</b>	Die-cast aluminum
<b>Working Environment</b>	-20°C to 45°C	<b>Fixture Dimension</b>	10.4 x6.3 x2.4in
<b>Working Humidity</b>	20%-90%	<b>Packaging</b>	4pcs/ctn
<b>CRI</b>	Ra>80	<b>Protection Grade</b>	IP65 wet-Location
<b>LED Source</b>	77pcs cree smd LEDs	<b>Warranty</b>	5 Years

### LED RETROFIT KIT PRODUCT OPTIONS LIST

Model No.	Power	Input Voltage	Input Current	Base	Lumens	CCT
G2G-RK-150W	150W	100-277VAC/347VAC/480VAC	1.5A(Max.)	E26/E39	14800-15500Lm	2700-8000K

# G2G-RK-120W

## LED Retrofit Kits

G2G's unique LED technology provides significant advantages in illumination efficiency, while minimizing refraction and reflection inside the optical system. Our fixtures ensure a lower density of dirt and dust particles that may settle within the light over time, and has competitively high standards in maintaining luminaire reliability for years to come.



### LED RETROFIT KIT SPECIFICATIONS

<b>Lifetime</b>	≥50,000 hours
<b>Working Environment</b>	-20°C to 45°C
<b>Working Humidity</b>	20%-90%
<b>CRI</b>	Ra>80
<b>LED Source</b>	56pcs cree smd LEDs

<b>Material</b>	Die-cast aluminum
<b>Fixture Dimension</b>	6.8 x4.9 x1.2in
<b>Packaging</b>	4pcs/ctn
<b>Protection Grade</b>	IP65 wet-Location
<b>Warranty</b>	5 Years

### LED RETROFIT KIT PRODUCT OPTIONS LIST

Model No.	Power	Input Voltage	Input Current	Base	Lumens	CCT
G2G-RK-120W	120W	100-277VAC/347VAC/480VAC	1.2A(Max.)	E26/E39	11800-12500Lm	2700-8000K

# G2G-RK-105W

## LED Retrofit Kits

G2G's unique LED technology provides significant advantages in illumination efficiency, while minimizing refraction and reflection inside the optical system. Our fixtures ensure a lower density of dirt and dust particles that may settle within the light over time, and has competitively high standards in maintaining luminaire reliability for years to come.



### LED RETROFIT KIT SPECIFICATIONS

<b>Lifetime</b>	≥50,000 hours	<b>Material</b>	Die-cast aluminum
<b>Working Environment</b>	-20°C to 45°C	<b>Fixture Dimension</b>	6.8 x4.9 x1.2in
<b>Working Humidity</b>	20%-90%	<b>Packaging</b>	4pcs/ctn
<b>CRI</b>	Ra>80	<b>Protection Grade</b>	IP65 wet-Location
<b>LED Source</b>	49pcs cree smd LEDs	<b>Warranty</b>	5 Years

### LED RETROFIT KIT PRODUCT OPTIONS LIST

Model No.	Power	Input Voltage	Input Current	Base	Lumens	CCT
G2G-RK-105W	105W	100-277VAC/347VAC/480VAC	1.05A(Max.)	E26/E39	9800-10500 Lm	2700-8000K